






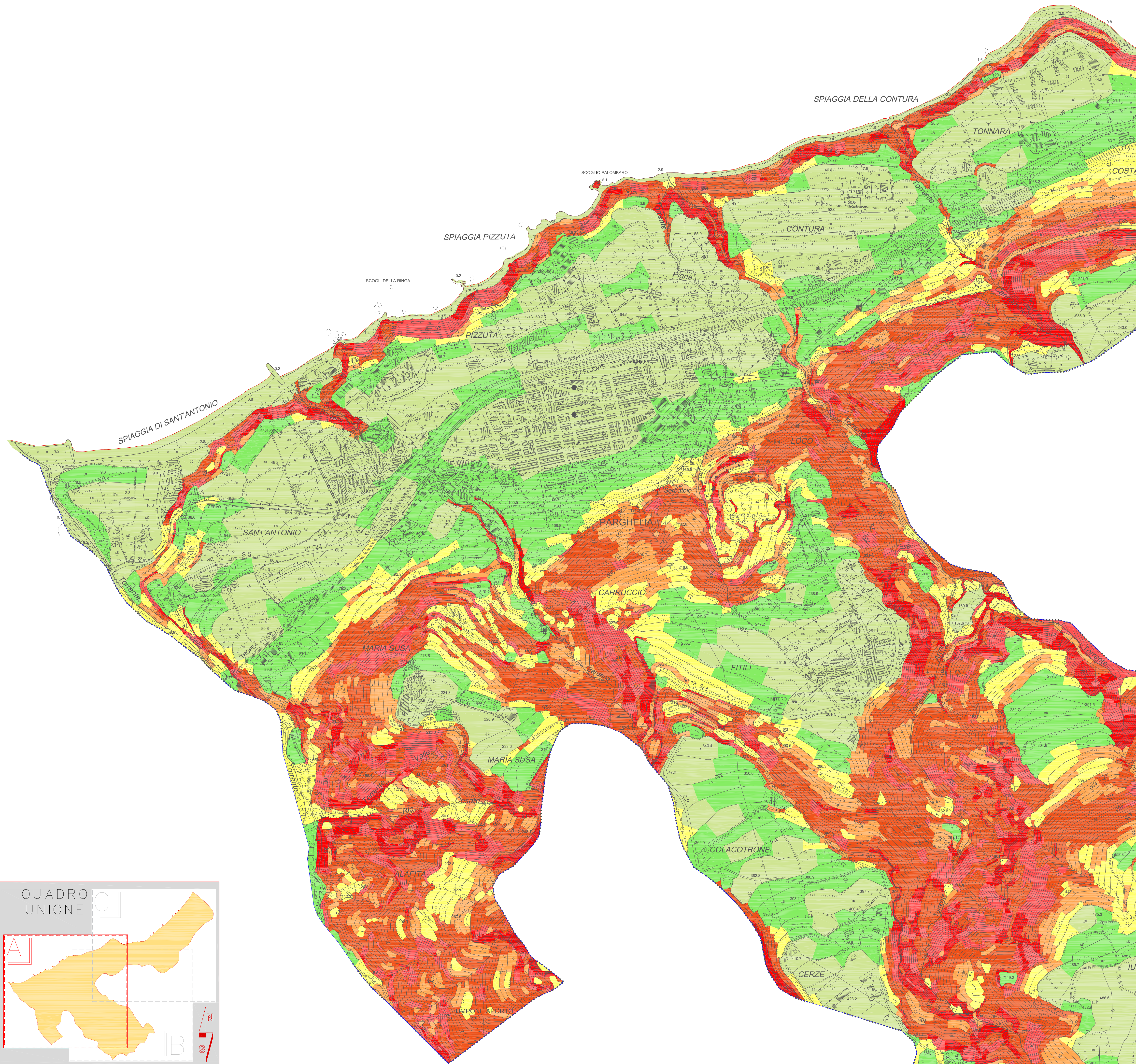


LEGENDA CARTA DELLE ACCLIVITA' DEI VERSANTI

	CLASSE DI PENDENZA I	0 - 10%
	CLASSE DI PENDENZA II	10 - 20% (5,71)
	CLASSE DI PENDENZA III	20 - 35% (11,3)
	CLASSE DI PENDENZA IV	35 - 50% (19,3)
	CLASSE DI PENDENZA V	50 - 80% (26,6)
	CLASSE DI PENDENZA VI	80 - 100% (38,6)
	CLASSE DI PENDENZA VII	> 100% (> 45°)



COMUNE DI PARGHELIA



DOCUMENTO PRELIMINARE

PIANO STRUTTURALE COMUNALE
(L.R.- 16.04.2002, n°19)

Data	Elaborato	Tav. n°
Aggiornamento	CARTA DELLE ACCLIVITA' DEI VERSANTI	G 9.1
		Scala:
		1:5000

Progettisti
Arch. Pasquale Bonaccorso Ing. Francesco Parisi

Geologo
Dott. Geol. Domenico Putrino

Agronomo
Dott. Agr. Orazio Conti

Approvato con Delibera n° del

Il Responsabile Unico Del Procedimento Il Segretario Comunale Il Sindaco

